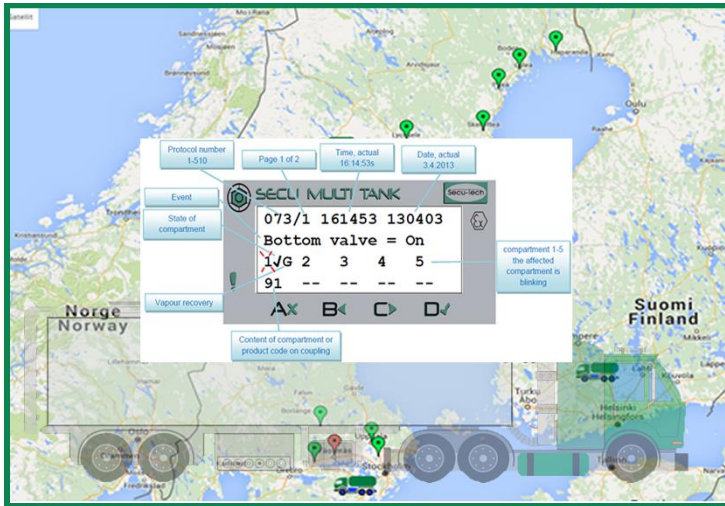


Produktinformation

SECU App – SECU Client



Data Manmanagement for SECU MultiTank and SECU TruckControl Tracking – Mapping - Geo-Fencing



With SECU App resp. SECU Client we offer a complete overview and control over the customer's logistic chain, from the loading depot, over the tanker-truck to the fuel station.

All relevant outputs of a tanker-truck can be controlled electronically and are saved in real time and position as well as transmitted and displayed on a digital map.

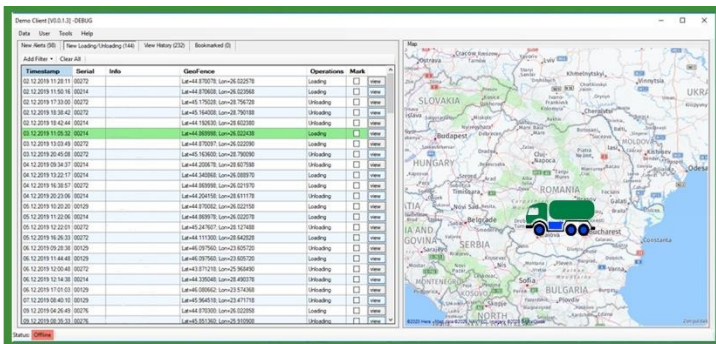
In case of manipulation warnings are sent immediately.

Position of the Tanker-Truck



- Live displaying on a digital map
- Display of evaluations in “red” or “green”
- Real-time evaluations
- Automated transmitting of alerts

View History



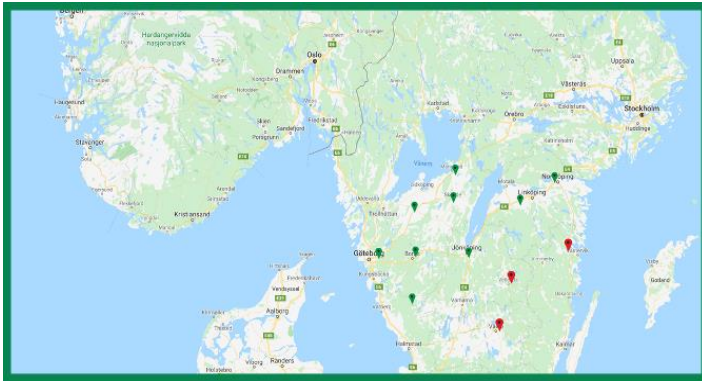
- Showing complete history of a tanker-truck
- Showing events in real-time and position
- Route control back into history
- Unauthorized accesses back in history
- Unlimited data

Produktinformation

SECU App – SECU Client



Tracking – Mapping – Geo-Fencing



- Control of all tanker-trucks in real-time and position live
- Displaying problematic events in “red”
- Information always and everywhere about the status of the tanker-trucks