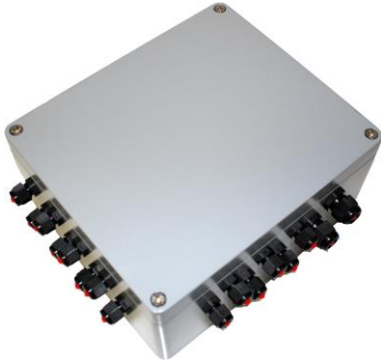


## Product Information

### SECU MultiControl (with SECU MultiReader 6/12 and SECU MultiRetain modules)



The **SECU MultiControl** supervisors residue sensors (and other safety contacts), as well as the product channels.

### Advantages of the SECU MultiControl

#### Evaluation of the residue sensors on the tank truck

The SECU MultiControl can supervise up to 24 residue sensors.

Normally we recommend for 100% detection of the residue recognition, install one sensor per tank chamber at the chamber bottom and one sensor in the respective piping near the outlet valve. But only one residue sensor is also possible. This happens with the SECU MultiRetain module.

#### Monitoring of the tank truck safety contacts

Through the SECU MultiRetain module can also be monitored different control devices e.g. cover open contacts

All procedures are logged with the exact time and GPS coordinates (Data from the SECU MultiGPS).

#### Monitoring of the product channels after EN 14116, EN 13616

Over the SECU MultiRetain modules can be assigned 6 and/or 12 product- or vapour connections. This data is compared with the data from the SECU MultiPID on the petrol station or at the depot and so a product mixture can be totally prevented.

#### ATEX certified for zone 1

The SECU MultiControl is normally installed in the armature cabinet of the tank truck and is certified for the ex zone 1.

#### Highest security

The intrinsically safe supply of the tank truck devices ensures a high degree of safety.

The robust, weatherproof housing (IP 66) is appropriate for the hard daily use.

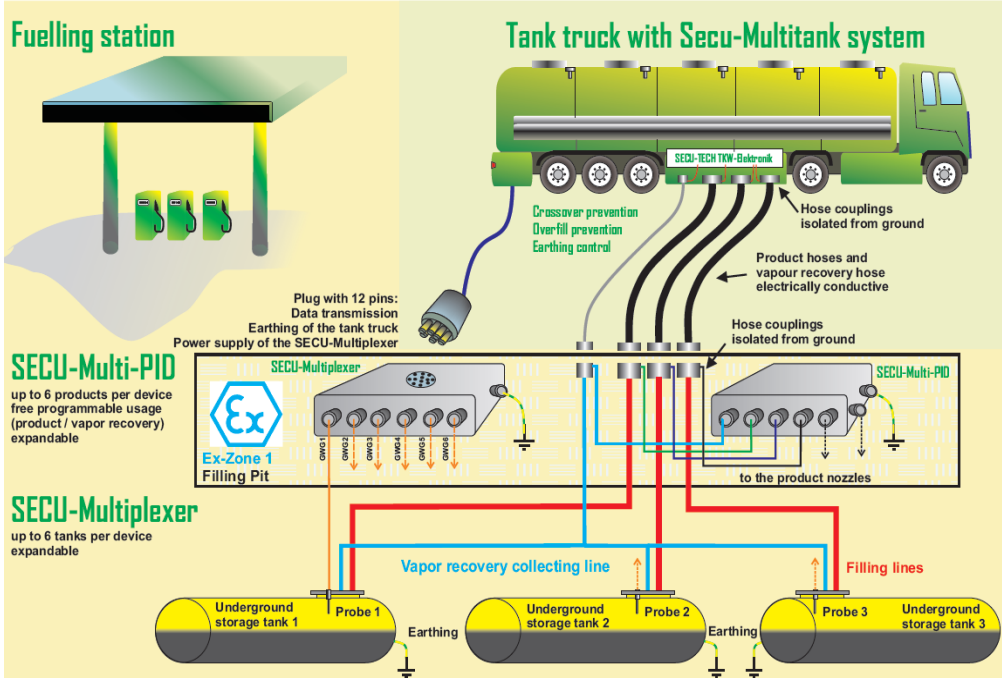
#### Communication over Modbus and RS232

All devices of the SECU MultiTank systems communicate over a two-wire Modbus.

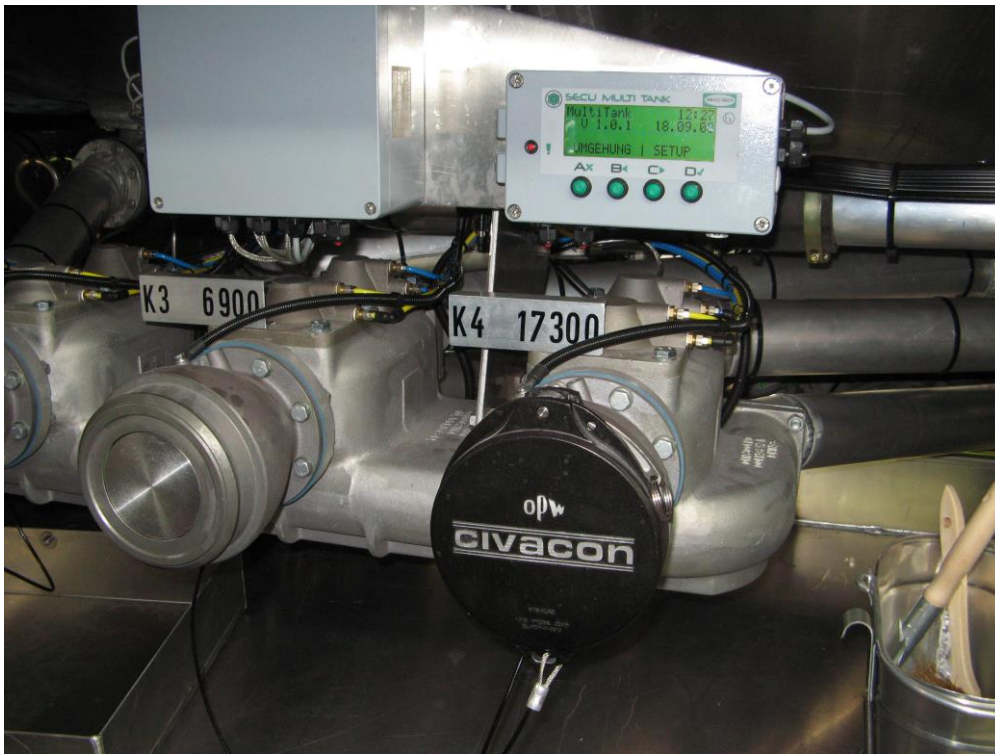
Interfaces outward e.g. to the tank truck electronics are possible with RS232 and RS485.

# Product Information

## SECU-Multitank - the comprehensive system for fuel distribution



**Simplified diagram**



**Practical example**  
Installation of a SECU MultiControl into a tank truck