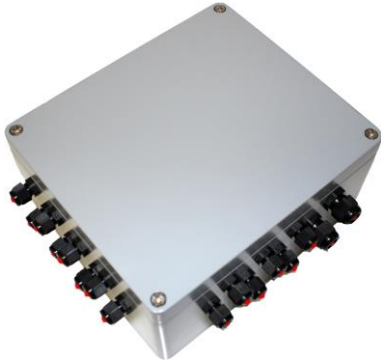


## Product Information

### SECU MultiPower (intrinsically safe power supply for the SECU multi-tank system)



The SECU MultiPower feeds the bus devices and supervises the tank truck grounding.

### Advantages of the SECU MultiPower

#### Power supply for the SECU MultiTank systems

The SECU MultiPower gives an intrinsically safe supply to all components of the SECU MultiTank systems at the tank truck.

#### Supply for the petrol station establishment

Overfill prevention systems on a petrol station working with SECU Multiplexers are supplied by a special 12 pin cable from the tank truck.

These devices are in the tank filling area on the petrol station, without their own power supply.

#### Grounding monitoring

The SECU MultiPower makes the grounding connection over the 12 pin plug and supervises these permanently at the petrol station.

It isn't possible to load or unload at the filling station, if the grounding is disconnected.

#### Control of the magnetic valves

Up to 20 different magnetic valves can be controlled with the SECU MultiPower at the tank truck.

These can be implemented in ex „d“ or ex „m“.

#### ATEX certified for zone 1

The SECU MultiPower is normally installed in the meter cabinet of the tank truck and is certified for the ex zone 1.

#### Highest security

The intrinsically safe supply of the tank truck devices ensures a high degree of safety.

The robust, weatherproof housing (IP 66) is appropriate for the hard daily use.

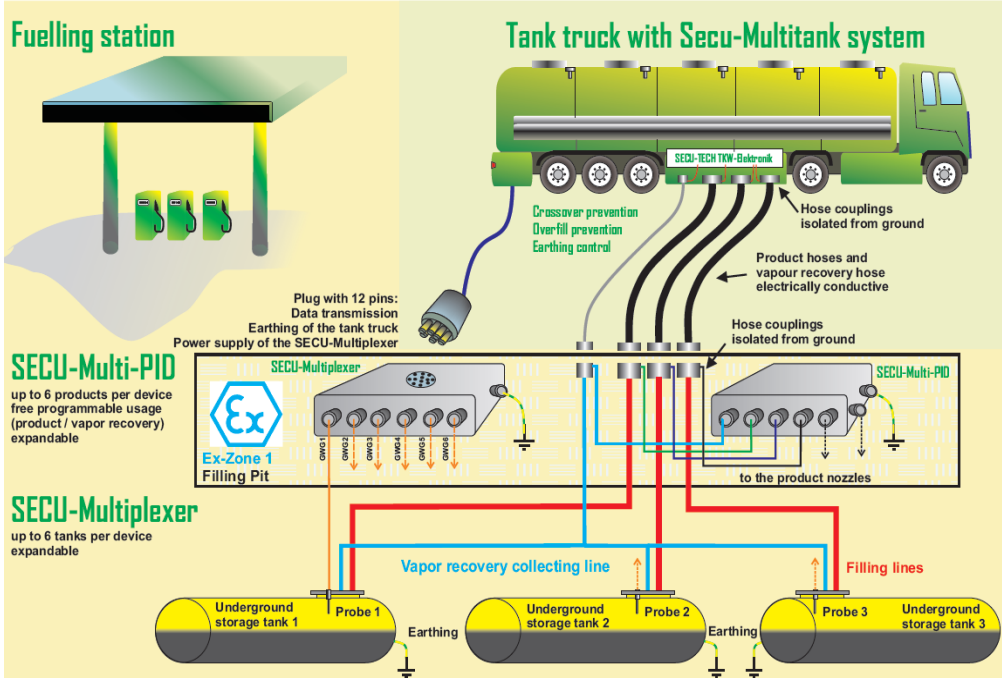
#### Communication over Modbus and RS232

All devices of the SECU MultiTank system communicate over a two-wire Modbus.

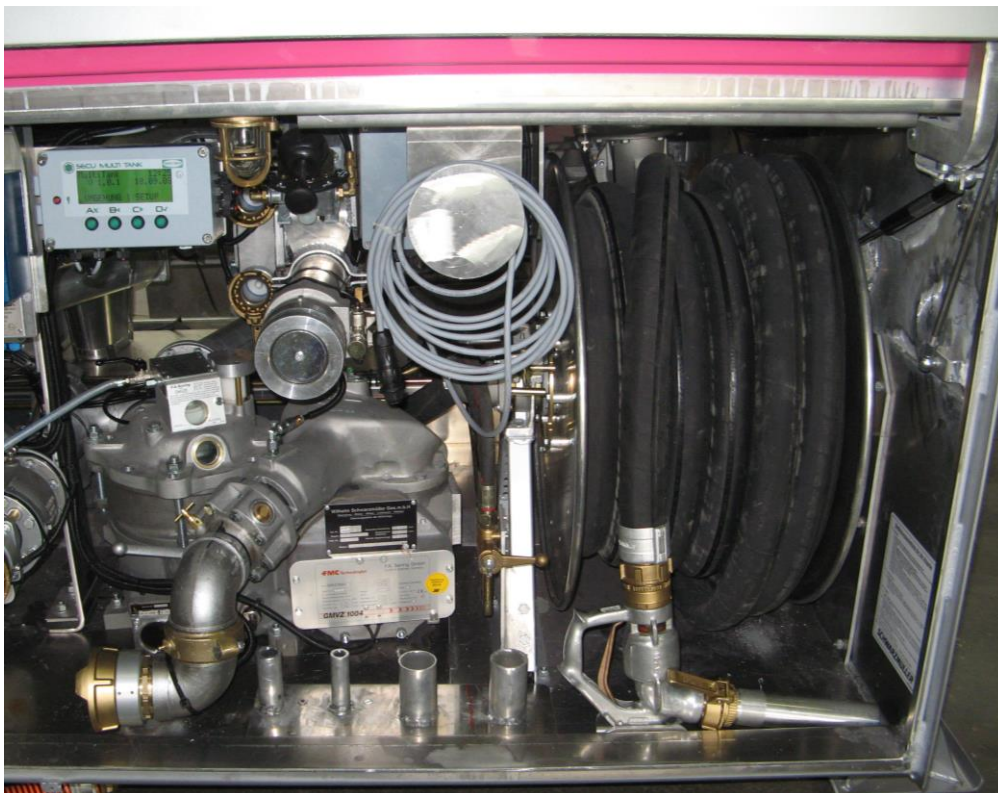
Interfaces outward e.g. to tank truck electronics are possible with RS232 and RS485.

# Product Information

## SECU-Multitank - the comprehensive system for fuel distribution



**Simplified diagram**



**Practical example**  
Installation of a SECU MultiPower into a tank truck